

OLD SCHOOL HOME LAYOUTS

FW
FRANKHAM
WALK
DEPTFORD

 Peabody

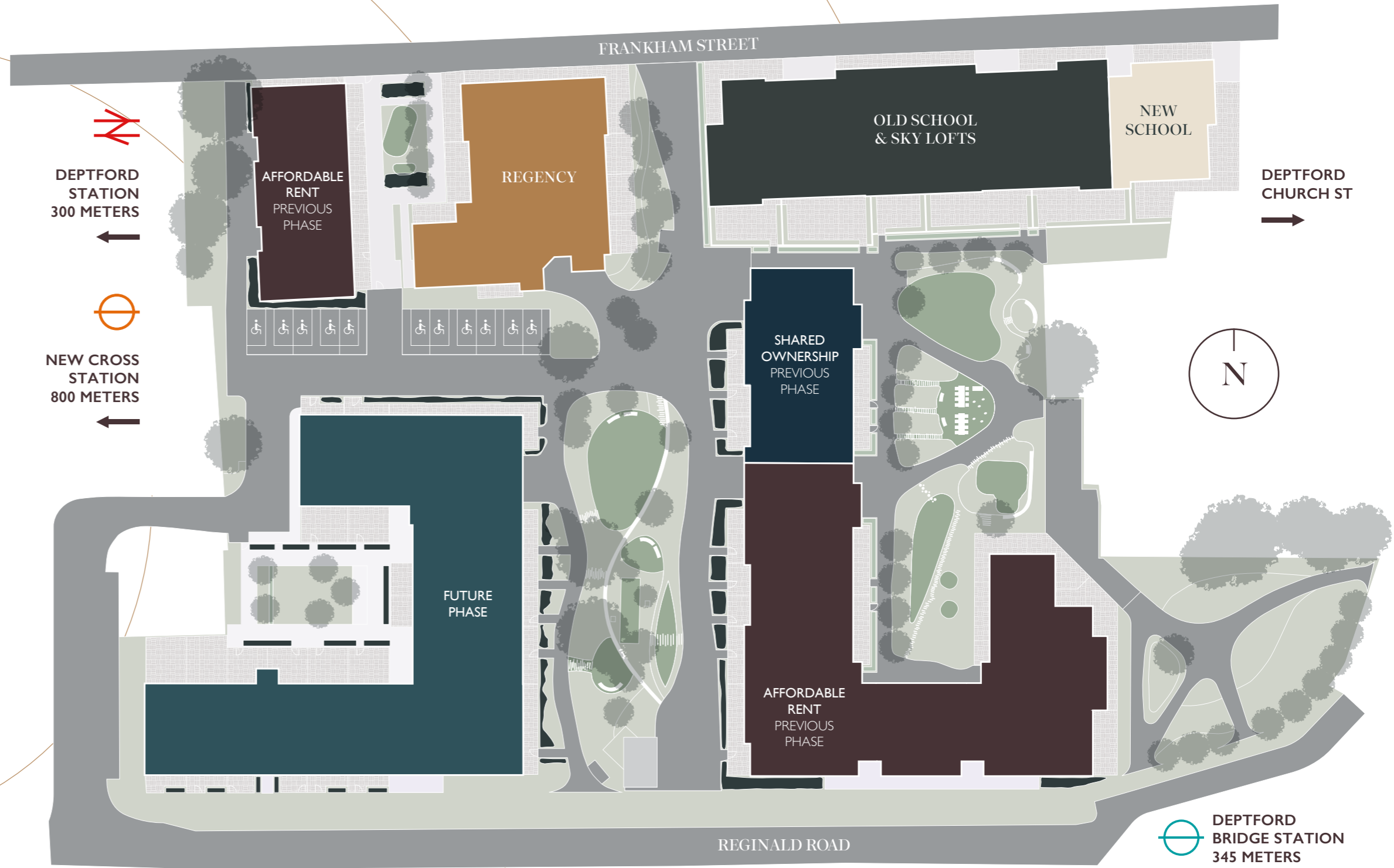


Computer generated artist impression

OLD SCHOOL

The Old School apartments are set within a beautifully restored Victorian school building, preserving the rich character and architectural heritage of the original frontage along Frankham Street. Generous proportions, large windows and carefully retained period detailing celebrate the building's historic past, while thoughtfully integrated contemporary finishes bring comfort and ease to modern living. Blending timeless craftsmanship with refined new design, the building forms a distinctive connection between the site's heritage and its new residential chapter.

Residence SITE PLAN



Site plan not to scale. Tenures may be subject to change. Landscaping is indicative only.



Computer generated artist impression

Old School SPECIFICATION

Kitchen

Traditional shaker-style kitchen units

Silestone quartz worktops with polished edges

White gloss porcelain tiled splashback

Soft close drawers and cupboards

Ceramic farmhouse sink

Brushed steel mixer tap

Integrated Bosch appliances including:

- Electric single oven
- Induction hob
- Integrated fridge freezer
- Integrated dishwasher
- Built in microwave

Freestanding washing machine housed within utility cupboard

Integrated waste and recycling bin

Feature pendant lighting to selected layouts

LED under cabinet task lighting

Bathroom & En Suite

Contemporary white sanitaryware throughout

Framed glass bath screen

Thermostatic shower with rainfall style shower head

Hansgrohe chrome taps and shower fittings

Wall-mounted mirrored storage cabinet with integrated shaver socket

Co-ordinated porcelain wall tiling in white gloss or marble effect finish

Slip resistant floor tiling

Heated chrome towel rail to all bathrooms and en suites

The specification is correct at the time of publication but may be subject to change as construction progresses. Images are indicative of the intended quality and style and may not reflect the final fixtures, fittings or furnishings.

Interior Finishes

Wood-effect Amtico vinyl flooring to living, kitchen and hallway areas

Carpet to bedrooms

Painted white walls and ceilings throughout

Contemporary brushed metal door furniture

Square edged skirting boards and architraves

Stained timber thresholds

Electrical & Lighting

LED downlights throughout the apartment

Video entry system

Data and multimedia points to living areas and bedrooms

Heating & Comfort

Underfloor heating throughout the apartment

Electric chrome towel radiators to bathrooms and en suites

Storage

Fitted wardrobe to principal bedroom with shelf and hanging rail

Built-in storage provided where layouts allow

Communal Areas

Secure entrance lobby with contemporary tiled finishes

Co-ordinated lighting and finishes throughout shared spaces

Peace of Mind

Long lease period

12 year NHBC warranty

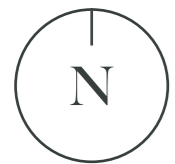
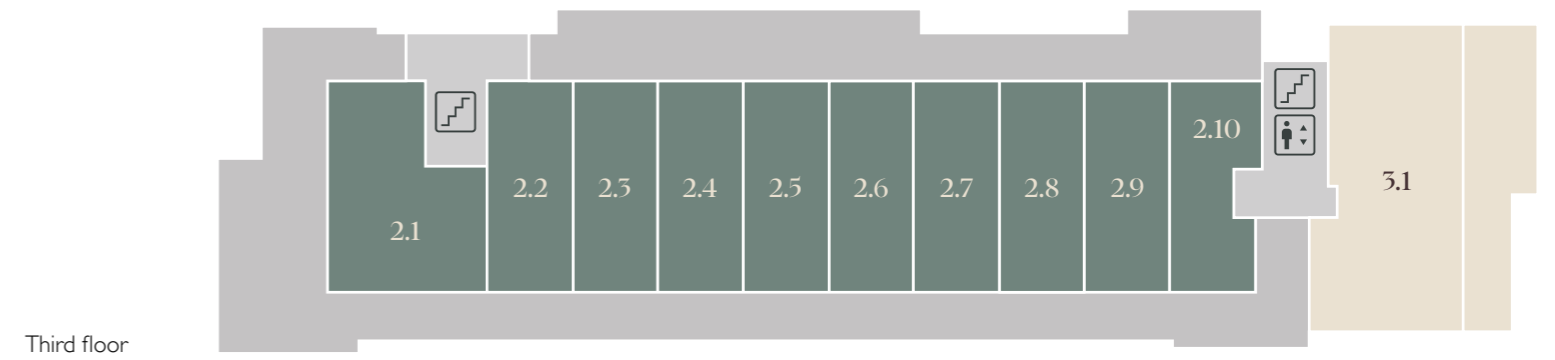
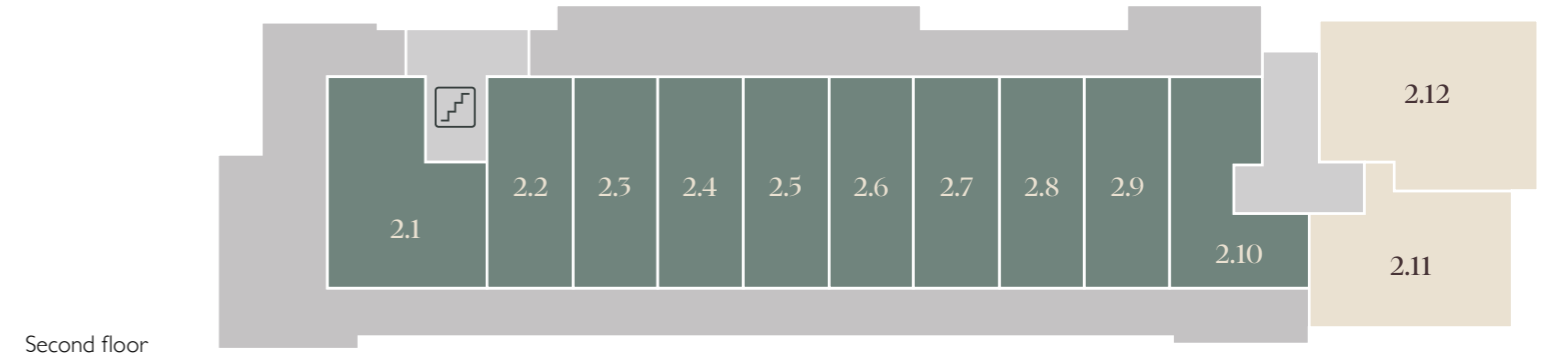
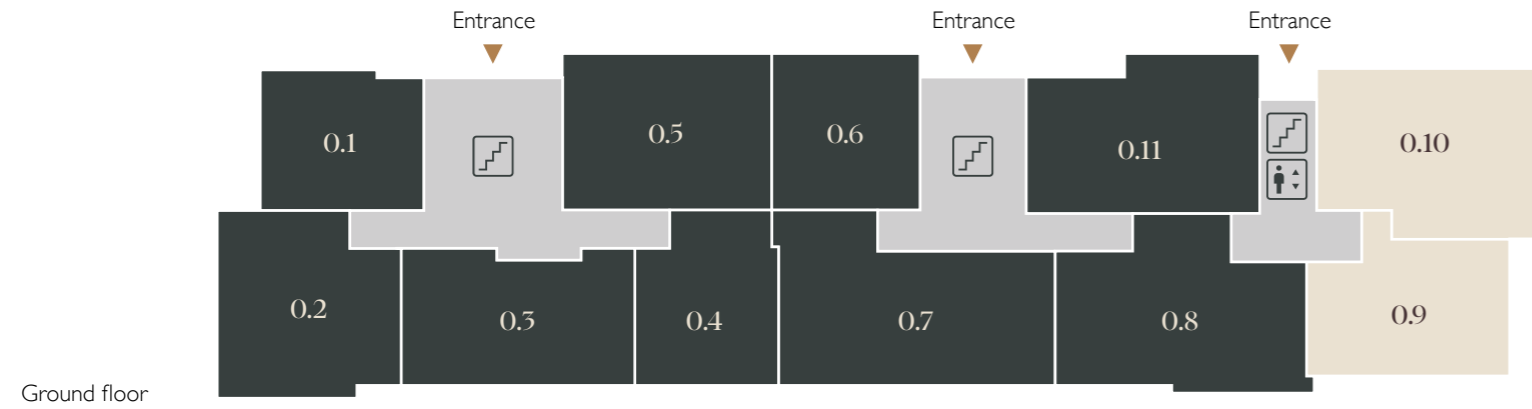
2 year defect period from practical completion





Computer generated artist impression

APARTMENT POSITIONS



KEY

- Sky Lofts Residence
- Old School Residence
- New School Residence
- Stairs
- Lift (New School usage only)

Apartment 0.1

ONE BEDROOM APARTMENT

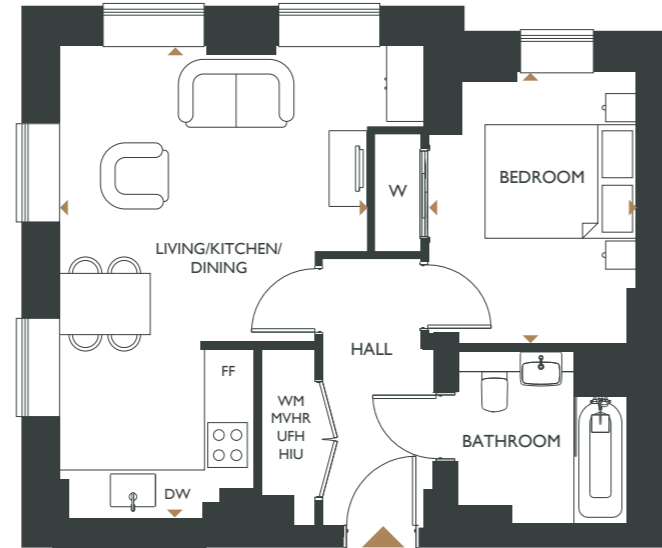
GROUND FLOOR

Gross Internal Area
46.7 sqm / 502.7 sqft

DIMENSIONS

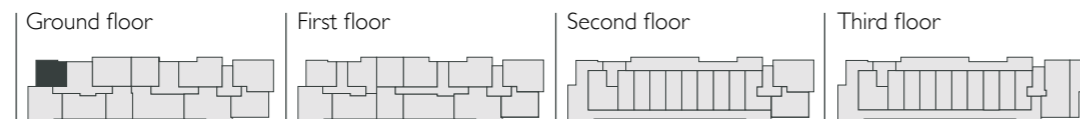
Living / Kitchen / Dining
6.25m x 4.07m / 20'6" x 13'4"

Bedroom
3.59m x 2.75m / 11'9" x 9'0"



FF Fridge Freezer **DW** Dishwasher
WM Washing Machine **W** Wardrobe
ST Storage **HIU** Heat Interface Units
UFH Underfloor heating
MVHR Mechanical Ventilation with Heat Recovery

POSITION



Apartment 0.2

TWO BEDROOM APARTMENT

GROUND & FIRST FLOOR

Gross Internal Area
70.1 sqm / 754.9 sqft

DIMENSIONS

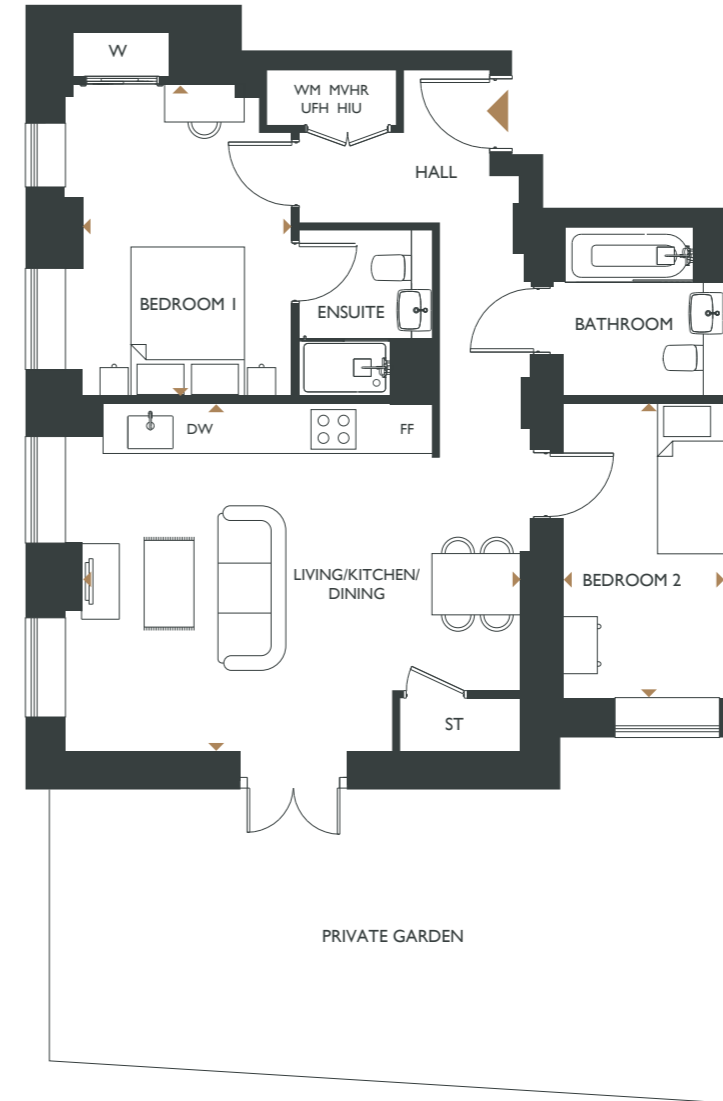
Living / Kitchen / Dining
4.59m x 6.04m / 15'0" x 19'9"

Bedroom 1
4.13m x 2.77m / 13'6" x 9'1"

Bedroom 2
3.91m x 2.13m / 12'10" x 7'0"

Private Garden
5.20m x 8.98m / 17'1" x 29'5"

Private Garden Area
48.8 sqm / 525.2 sqft



POSITION



Floorplans shown are indicative only. The kitchen layout and furniture positions are for indicative purposes only. There may be some high level boxing for services within units. All dimensions indicated are approximate and should not be relied upon for carpet sizes or items of furniture. Peabody reserves the right to make changes to these plans prior to exchange of contracts. For exact plot specification, details of external and internal finishes, dimensions and floorplan differences, please speak to a Sales Executive for more details.

Apartment 0.3

TWO BEDROOM APARTMENT

GROUND FLOOR

Gross Internal Area
69.0 sqm / 742.8 sqft

DIMENSIONS

Living / Kitchen / Dining
6.13m x 4.20m / 20'1" x 13'9"

Bedroom 1
3.81m x 4.09m / 12'6" x 13'5"

Bedroom 2
3.81m x 3.64m / 12'6" x 11'11"

Private Garden
6.27m x 11.57m / 20'7" x 37'11"

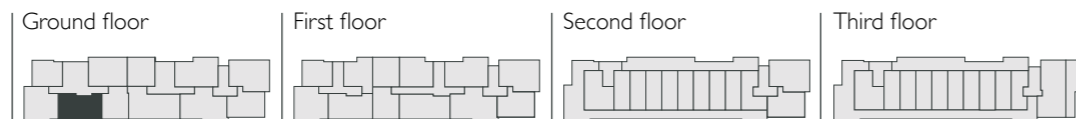
Private Garden Area
72.4 sqm / 779.6 sqft



FF Fridge Freezer **DW** Dishwasher
WM Washing Machine **W** Wardrobe
ST Storage **HIU** Heat Interface Units
UFH Underfloor heating
MVHR Mechanical Ventilation with Heat Recovery



POSITION



Apartment 0.4

ONE BEDROOM APARTMENT

GROUND FLOOR

Gross Internal Area
52.0 sqm / 560.1 sqft

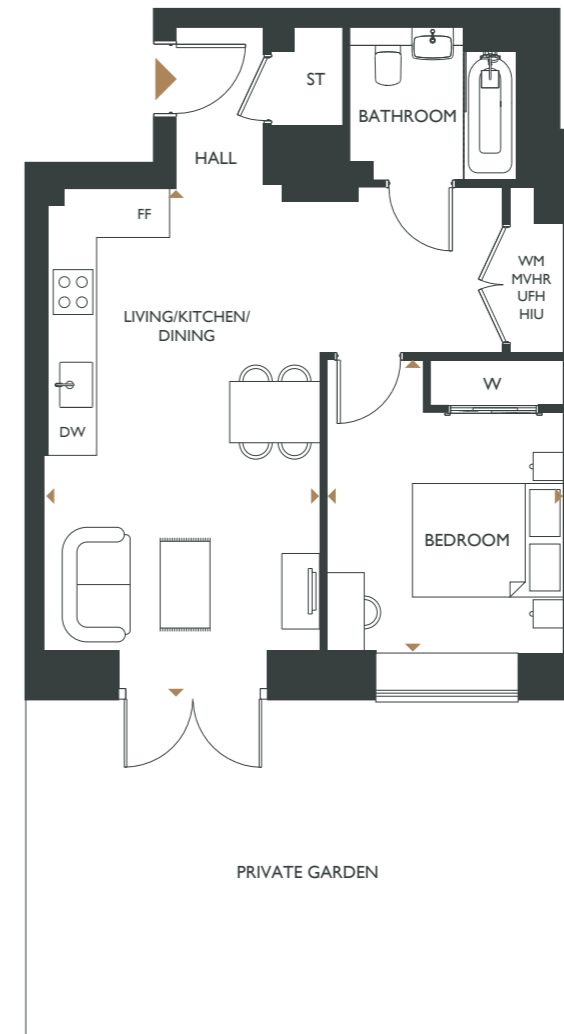
DIMENSIONS

Living / Kitchen / Dining
3.65m x 6.19m / 12'0" x 20'3"

Bedroom 1
3.12m x 3.89m / 10'3" x 12'9"

Private Garden
7.41m x 4.91m / 24'4" x 16'1"

Private Garden Area
34.0 sqm / 366.1 sqft



POSITION



Floorplans shown are indicative only. The kitchen layout and furniture positions are for indicative purposes only. There may be some high level boxing for services within units. All dimensions indicated are approximate and should not be relied upon for carpet sizes or items of furniture. Peabody reserves the right to make changes to these plans prior to exchange of contracts. For exact plot specification, details of external and internal finishes, dimensions and floorplan differences, please speak to a Sales Executive for more details.

Apartment 0.5

TWO BEDROOM APARTMENT

GROUND FLOOR

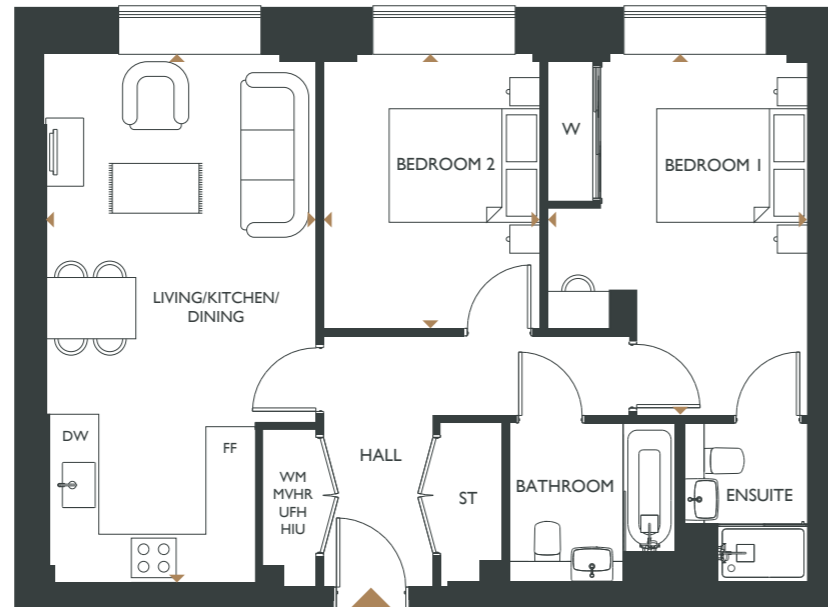
Gross Internal Area
70.4 sqm / 758.3 sqft

DIMENSIONS

Living / Kitchen / Dining
7.00m x 3.57m / 22'11" x 11'8"

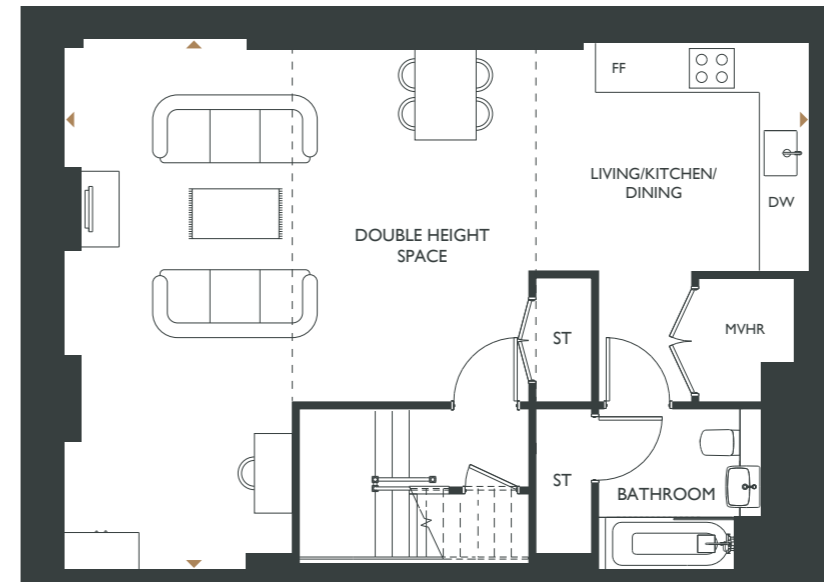
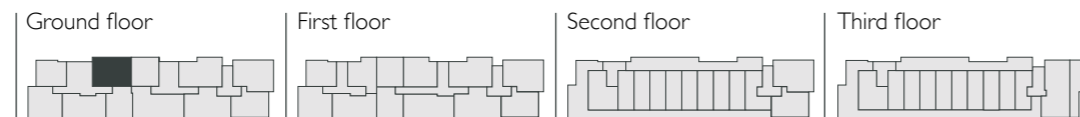
Bedroom 1
4.78m x 3.45m / 15'8" x 11'4"

Bedroom 2
3.63m x 2.94m / 11'11" x 9'8"



FF Fridge Freezer **DW** Dishwasher
WM Washing Machine **W** Wardrobe
ST Storage **UFH** Underfloor heating
MVHR Mechanical Ventilation with Heat Recovery

POSITION



Basement
Dashed lines indicate high level beams



Ground floor

POSITION



Apartment 0.6

ONE BEDROOM APARTMENT

BASEMENT & GROUND FLOOR

Gross Internal Area
93.5 sqm / 1006.2 sqft

DIMENSIONS

Living Kitchen Dining
7.02m x 9.89m / 23'0" x 32'5"

Bedroom
4.54m x 3.60m / 14'10" x 11'10"

Floorplans shown are indicative only. The kitchen layout and furniture positions are for indicative purposes only. There may be some high level boxing for services within units. All dimensions indicated are approximate and should not be relied upon for carpet sizes or items of furniture. Peabody reserves the right to make changes to these plans prior to exchange of contracts. For exact plot specification, details of external and internal finishes, dimensions and floorplan differences, please speak to a Sales Executive for more details.



Apartment 0.7

TWO BEDROOM APARTMENT

GROUND FLOOR

Gross Internal Area
92.3 sqm / 994.0 sqft

DIMENSIONS

Living / Kitchen / Dining
5.41m x 6.75m / 17'9" x 22'1"

Bedroom 1
6.23m x 3.30m / 20'5" x 10'10"

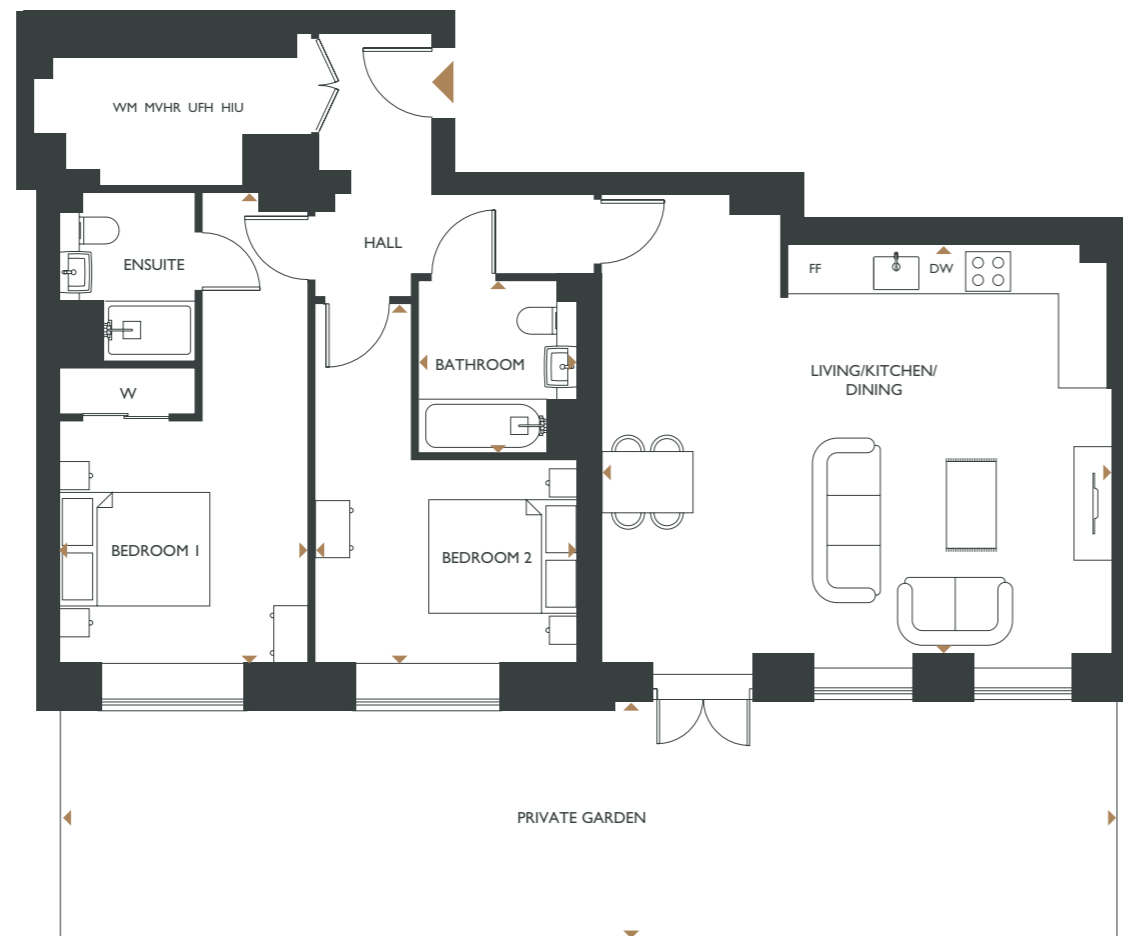
Bedroom 2
4.73m x 3.49m / 15'6" x 11'5"

Private Garden
4.88m x 13.72m / 16'0" x 45'0"

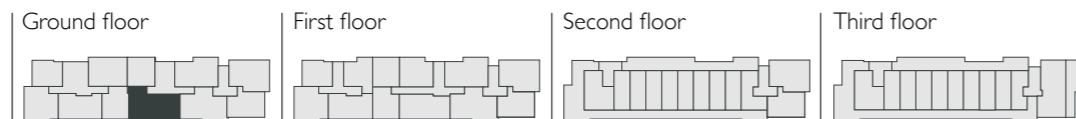
Private Garden Area
68.8 sqm 741.0 sqft



FF Fridge Freezer **DW** Dishwasher
WM Washing Machine **W** Wardrobe
ST Storage **HIU** Heat Interface Units
UFH Underfloor heating
MVHR Mechanical Ventilation with Heat Recovery



POSITION



Apartment 0.8

TWO BEDROOM APARTMENT

GROUND FLOOR

Gross Internal Area
83.2 sqm / 895.1 sqft

DIMENSIONS

Living / Kitchen / Dining
5.84m x 5.97m / 19'2" x 19'7"

Bedroom 1
5.05m x 3.02m / 16'7" x 9'11"

Bedroom 2
4.64m x 2.81m / 15'2" x 9'3"

Private Garden
5.07m x 12.70m / 16'7" x 41'8"

Private Garden Area
61.5 sqm / 661.6 sqft



POSITION



Floorplans shown are indicative only. The kitchen layout and furniture positions are for indicative purposes only. There may be some high level boxing for services within units. All dimensions indicated are approximate and should not be relied upon for carpet sizes or items of furniture. Peabody reserves the right to make changes to these plans prior to exchange of contracts. For exact plot specification, details of external and internal finishes, dimensions and floorplan differences, please speak to a Sales Executive for more details.

Apartment 0.11

TWO BEDROOM APARTMENT

GROUND FLOOR

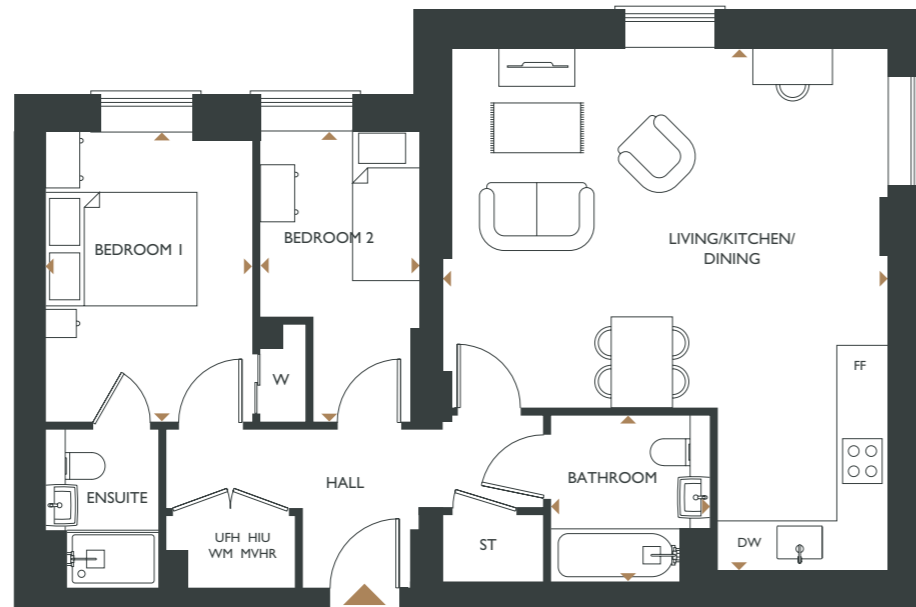
Gross Internal Area
72.8 sqm / 783.6 sqft

DIMENSIONS

Living / Kitchen / Dining
6.91m x 5.77m / 22'8" x 18'11"

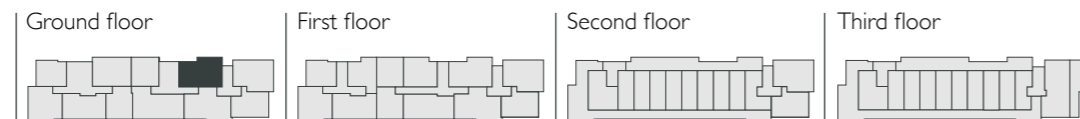
Bedroom 1
3.84m x 2.75m / 12'7" x 9'0"

Bedroom 2
3.83m x 2.10m / 12'7" x 6'11"



FF Fridge Freezer **DW** Dishwasher
WM Washing Machine **W** Wardrobe
ST Storage **HIU** Heat Interface Units
UFH Underfloor heating
MVHR Mechanical Ventilation with Heat Recovery

POSITION



Apartment 1.12

TWO BEDROOM APARTMENT

FIRST FLOOR

Gross Internal Area
73.6 sqm / 791.8 sqft

DIMENSIONS

Living / Kitchen / Dining
6.91m x 5.77m / 22'8" x 18'11"

Bedroom 1
3.86m x 2.75m / 12'8" x 9'0"

Bedroom 2
3.88m x 2.10m / 12'8" x 6'11"



POSITION



Floorplans shown are indicative only. The kitchen layout and furniture positions are for indicative purposes only. There may be some high level boxing for services within units. All dimensions indicated are approximate and should not be relied upon for carpet sizes or items of furniture. Peabody reserves the right to make changes to these plans prior to exchange of contracts. For exact plot specification, details of external and internal finishes, dimensions and floorplan differences, please speak to a Sales Executive for more details.

Apartment 1.1

ONE BEDROOM APARTMENT

FIRST FLOOR

Gross Internal Area
47.4 sqm / 509.8 sqft

DIMENSIONS

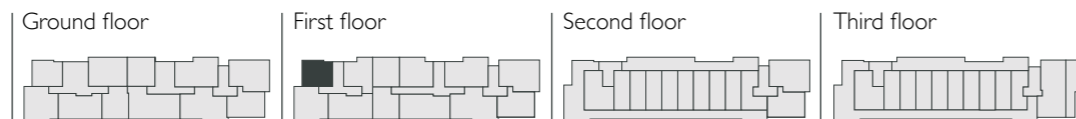
Living / Kitchen / Dining
6.28m x 4.25m / 20'7" x 13'11"

Bedroom
3.46m x 3.30m / 11'4" x 10'10"



FF Fridge Freezer **DW** Dishwasher
WM Washing Machine **W** Wardrobe
ST Storage **HIU** Heat Interface Units
UFH Underfloor heating
MVHR Mechanical Ventilation with Heat Recovery

POSITION



Apartment 1.2

TWO BEDROOM APARTMENT

FIRST FLOOR

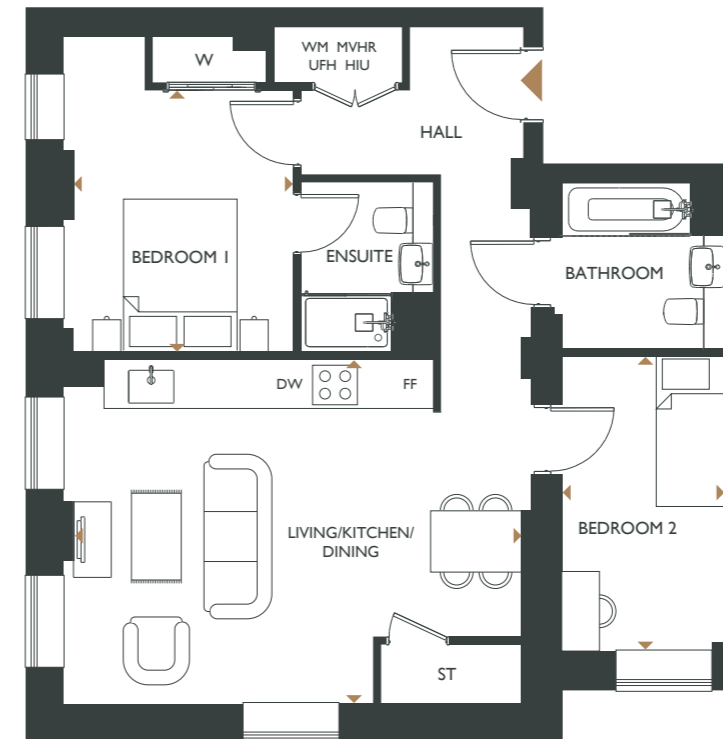
Gross Internal Area
70.0 sqm / 753.4 sqft

DIMENSIONS

Living / Kitchen / Dining
4.56m x 5.93m / 14'11" x 19'5"

Bedroom 1
4.16m x 2.91m / 13'8" x 9'6"

Bedroom 2
3.91m x 2.16m / 12'10" x 7'1"



POSITION



Floorplans shown are indicative only. The kitchen layout and furniture positions are for indicative purposes only. There may be some high level boxing for services within units. All dimensions indicated are approximate and should not be relied upon for carpet sizes or items of furniture. Peabody reserves the right to make changes to these plans prior to exchange of contracts. For exact plot specification, details of external and internal finishes, dimensions and floorplan differences, please speak to a Sales Executive for more details.

Apartment 1.3

TWO BEDROOM APARTMENT

FIRST FLOOR

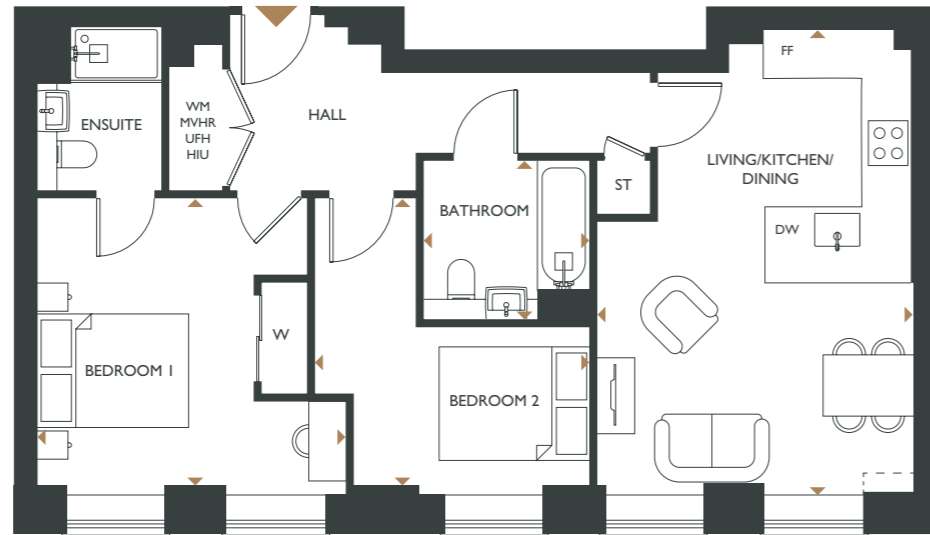
Gross Internal Area
68.8 sqm / 740.2 sqft

DIMENSIONS

Living / Kitchen / Dining
6.14m x 4.20m / 20'1" x 13'9"

Bedroom 1
3.80m x 4.09m / 12'5" x 13'5"

Bedroom 2
3.81m x 3.64m / 12'6" x 11'11"

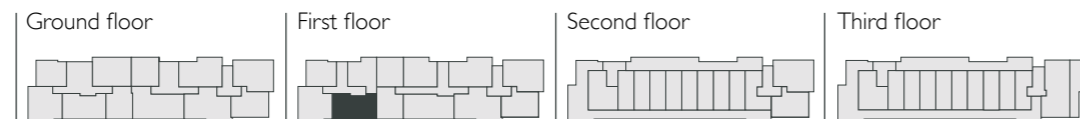


Dashed lines indicate high level services pelmet



FF Fridge Freezer **DW** Dishwasher
WM Washing Machine **W** Wardrobe
ST Storage **HIU** Heat Interface Units
UFH Underfloor heating
MVHR Mechanical Ventilation with Heat Recovery

POSITION



Apartment 1.4

ONE BEDROOM APARTMENT

FIRST FLOOR

Gross Internal Area
52.1 sqm / 561.0 sqft

DIMENSIONS

Living / Kitchen / Dining
7.03m x 3.52m / 23'0" x 11'7"

Bedroom
3.59m x 3.55m / 11'9" x 11'8"



POSITION



Floorplans shown are indicative only. The kitchen layout and furniture positions are for indicative purposes only. There may be some high level boxing for services within units. All dimensions indicated are approximate and should not be relied upon for carpet sizes or items of furniture. Peabody reserves the right to make changes to these plans prior to exchange of contracts. For exact plot specification, details of external and internal finishes, dimensions and floorplan differences, please speak to a Sales Executive for more details.



Computer generated artist impression

Apartment 1.5

ONE BEDROOM APARTMENT

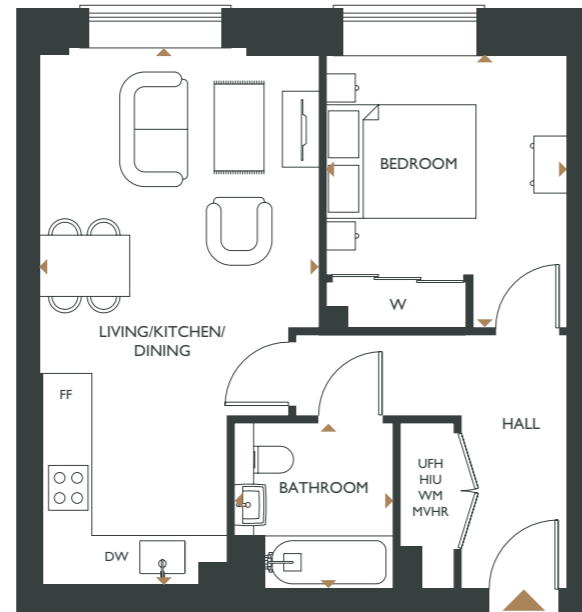
FIRST FLOOR

Gross Internal Area
49.6 sqm / 534.1 sqft

DIMENSIONS

Living / Kitchen / Dining
7.09m x 3.70m / 23'3" x 12'1"

Bedroom
3.60m x 3.19m / 11'10" x 10'5"



Apartment 1.6

ONE BEDROOM APARTMENT

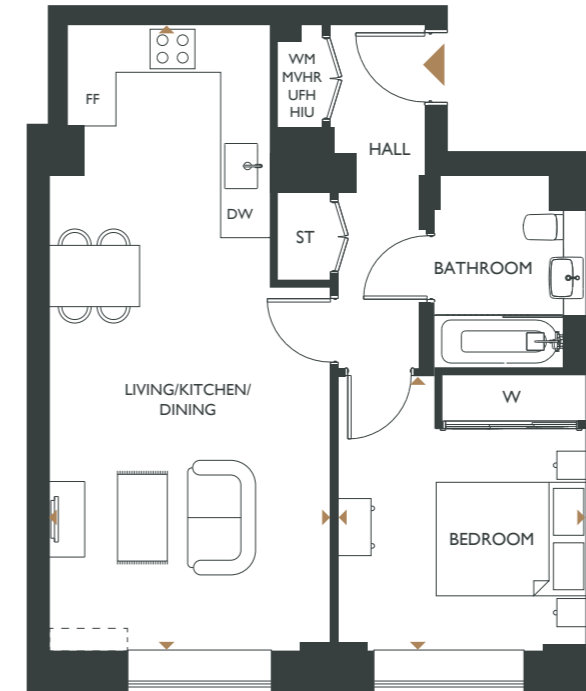
FIRST FLOOR

Gross Internal Area
53.9 sqm / 580.2 sqft

DIMENSIONS

Living / Kitchen / Dining
8.28m x 3.73m / 27'2" x 12'3"

Bedroom
3.67m x 3.25m / 12'0" x 10'8"

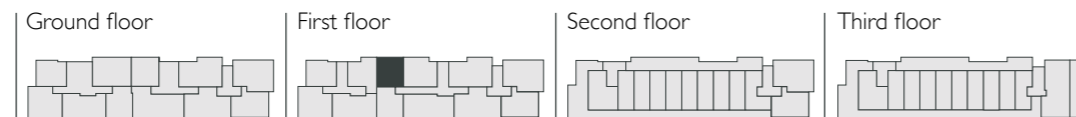


Dashed lines indicate high level services pelmet



FF Fridge Freezer **DW** Dishwasher
WM Washing Machine **W** Wardrobe
ST Storage **HIU** Heat Interface Units
UFH Underfloor heating
MVHR Mechanical Ventilation with Heat Recovery

POSITION



POSITION



Floorplans shown are indicative only. The kitchen layout and furniture positions are for indicative purposes only. There may be some high level boxing for services within units. All dimensions indicated are approximate and should not be relied upon for carpet sizes or items of furniture. Peabody reserves the right to make changes to these plans prior to exchange of contracts. For exact plot specification, details of external and internal finishes, dimensions and floorplan differences, please speak to a Sales Executive for more details.

Apartment 1.7

TWO BEDROOM APARTMENT

FIRST FLOOR

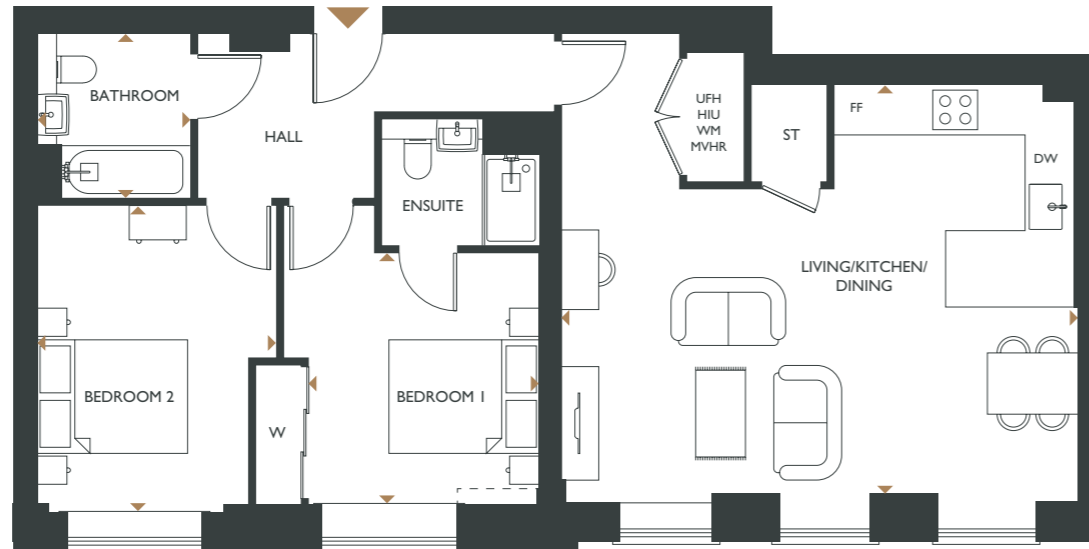
Gross Internal Area
82.8 sqm / 891.1 sqft

DIMENSIONS

Living / Kitchen / Dining
5.43m x 6.83m / 17'9" x 22'5"

Bedroom 1
3.93m x 3.42m / 12'10" x 11'2"

Bedroom 2
4.03m x 3.18m / 13'3" x 10'5"



Dashed lines indicate high level services pelmet

Apartment 1.8

ONE BEDROOM APARTMENT

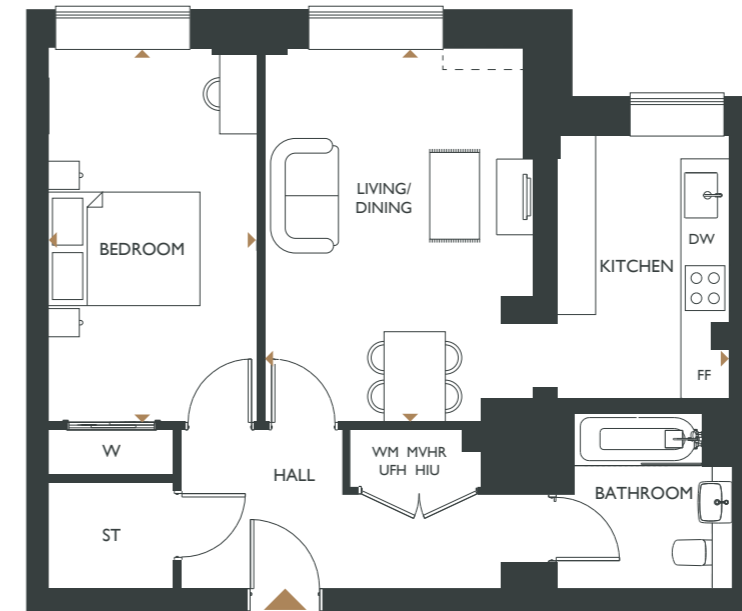
FIRST FLOOR

Gross Internal Area
61.4 sqm / 661.1 sqft

DIMENSIONS

Living / Kitchen / Dining
4.94m x 6.19m / 16'2" x 20'3"

Bedroom
4.94m x 2.75m / 16'2" x 9'0"



Dashed lines indicate high level services pelmet



FF Fridge Freezer **DW** Dishwasher
WM Washing Machine **W** Wardrobe
ST Storage **HIU** Heat Interface Units
UFH Underfloor heating
MVHR Mechanical Ventilation with Heat Recovery

POSITION



POSITION



Floorplans shown are indicative only. The kitchen layout and furniture positions are for indicative purposes only. There may be some high level boxing for services within units. All dimensions indicated are approximate and should not be relied upon for carpet sizes or items of furniture. Peabody reserves the right to make changes to these plans prior to exchange of contracts. For exact plot specification, details of external and internal finishes, dimensions and floorplan differences, please speak to a Sales Executive for more details.

Apartment 1.9

TWO BEDROOM APARTMENT

FIRST FLOOR

Gross Internal Area
83.6 sqm / 899.9 sqft

DIMENSIONS

Living / Kitchen / Dining
5.86m x 5.94m / 19'2" x 19'6"

Bedroom 1
5.05m x 3.02m / 16'7" x 9'11"

Bedroom 2
4.64m x 2.83m / 15'3" x 9'3"

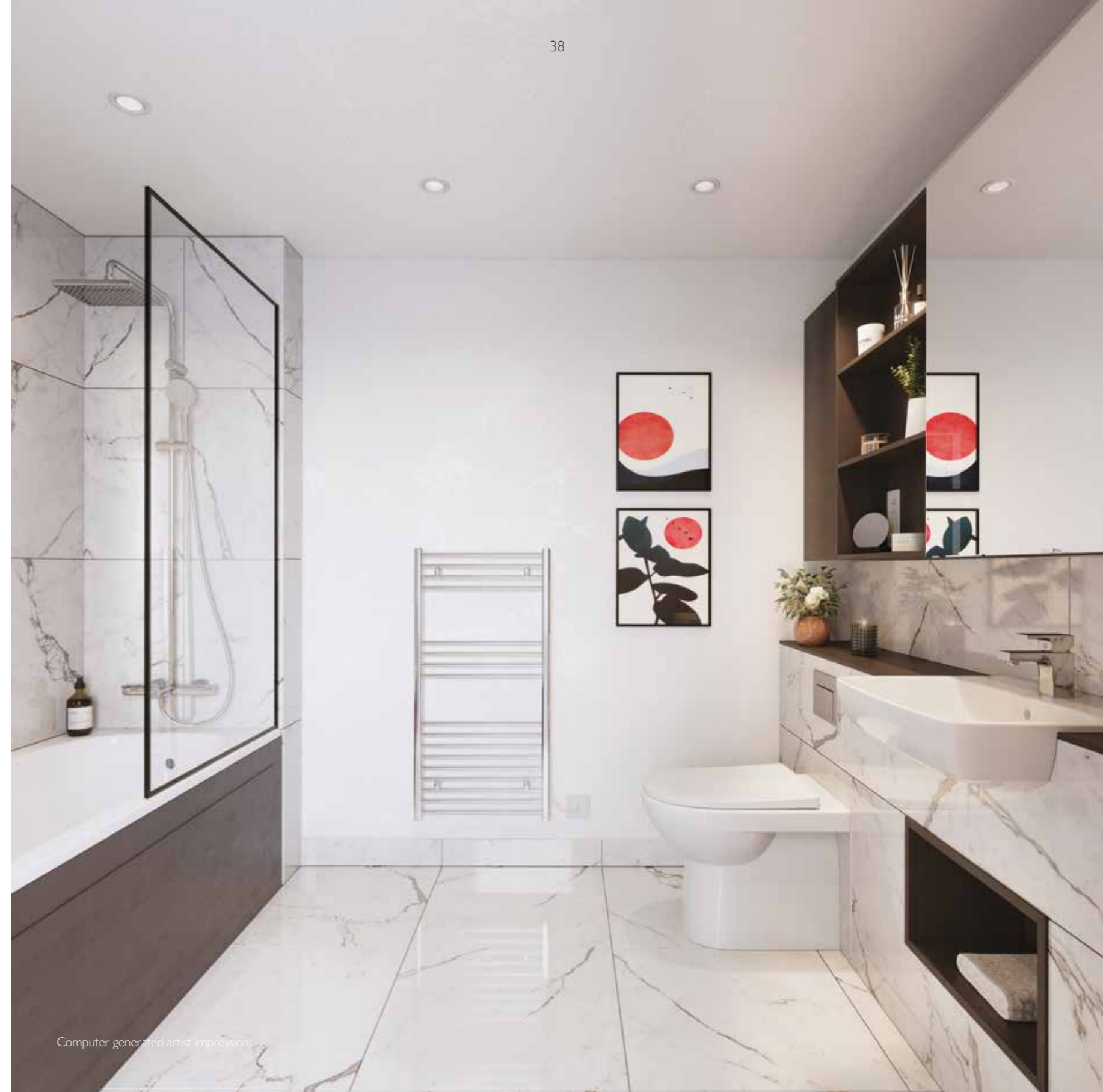
Floorplans shown are indicative only. The kitchen layout and furniture positions are for indicative purposes only. There may be some high level boxing for services within units. All dimensions indicated are approximate and should not be relied upon for carpet sizes or items of furniture. Peabody reserves the right to make changes to these plans prior to exchange of contracts. For exact plot specification, details of external and internal finishes, dimensions and floorplan differences, please speak to a Sales Executive for more details.



FF Fridge Freezer **DW** Dishwasher
WM Washing Machine **W** Wardrobe
ST Storage **HIU** Heat Interface Units
UFH Underfloor heating
MVHR Mechanical Ventilation with Heat Recovery



POSITION



Computer generated artist impression

CHAPTER FOUR

More than just a place to live

We at Peabody have a proud legacy of helping generations of homebuyers and residents find their place in thriving neighbourhoods, communities and homes for over 160 years.

The team at Peabody New Homes is dedicated to finding you a home that is more than just a place to live. A place you can call your own. A place to belong. A place that you're proud to call home.



Find @PeabodyNewHomes on



BUILDING HISTORY

Formed over 160 years ago by the American financier and philanthropist George Peabody, Peabody is one of the UK's oldest and largest housing associations responsible for more than 109,000 homes and around 220,000 residents across London and the Home Counties.



QUALITY, DESIGN & SUSTAINABILITY

Peabody's reputation is one of the most respected in the housing industry renowned for quality, multi-award-winning and innovative design. We work with industry experts and continually monitor quality throughout the building process to reduce our impact on climate change, lessen our carbon footprint and create properties people are proud to call home.

Our Greener Homes Programme is our commitment to the environment and will aim to minimise our impact on the planet and support thriving neighbourhoods.



Scan here to find out more

*2024/25 Annual Report



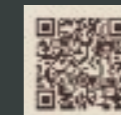
CUSTOMER FOCUS

Whether it's your first or forever home, we know that buying a new place can be a demanding time. Our sales team is committed to guiding you through the process and helping you every step of the way. Rated "Excellent" on Trustpilot, we're proud to offer you a service that makes a difference.



SOCIAL IMPACT

Our social purpose is why we exist. We re-invest the surplus made from the sale of our homes to provide more homes and services to those who need it most. We deliver services that support customers and the wider communities that we work in, and invest in local projects through our Community Foundation.



Scan here to find out more



